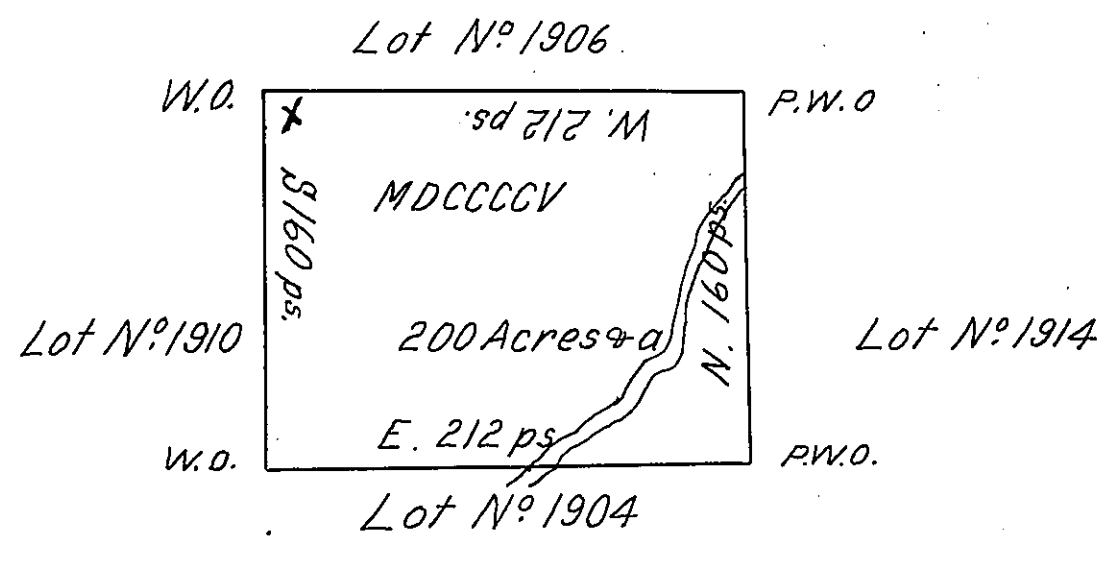


FORM No. 1.

Drawn 14<sup>th</sup> May  
1806 by John Akely  
in lieu of N<sup>o</sup> 235



In pursuance of an Act of General Assembly of the State of Pennsylvania, passed the 24<sup>th</sup> day of February, 1785, entitled "An Act for directing the mode of distributing the Donation Lands, promised the Troops by this Commonwealth;" and by order of the Surveyor General, with the approbation of the Honorable the Executive Council, I have surveyed on the 22<sup>nd</sup> day of June, 1786, the above described Tract of Two hundred Acres of Land, and allowance for roads, &c. N<sup>o</sup> 1905, situate in District N<sup>o</sup> 3, on the west side of the Alleghany river, in the county of Westmoreland.

To John Lukens, Esquire,  
Surveyor General. }

G. Evans  
D. Surveyor

Now Mercer County.

IN TESTIMONY that the above is a copy of the original remaining on file in the Department of Internal Affairs of Pennsylvania, made conformably to an Act of Assembly approved the 16<sup>th</sup> day of February, 1833, I have hereunto set my Hand and caused the Seal of said Department to be affixed at Harrisburg, this third day of April 1907

*Geo. A. P. Brown*  
Secretary of Internal Affairs.